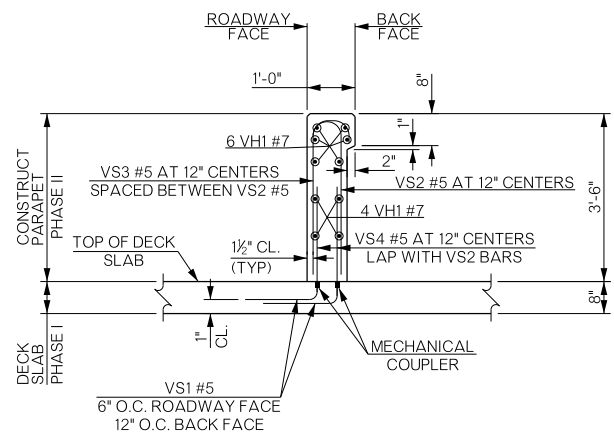
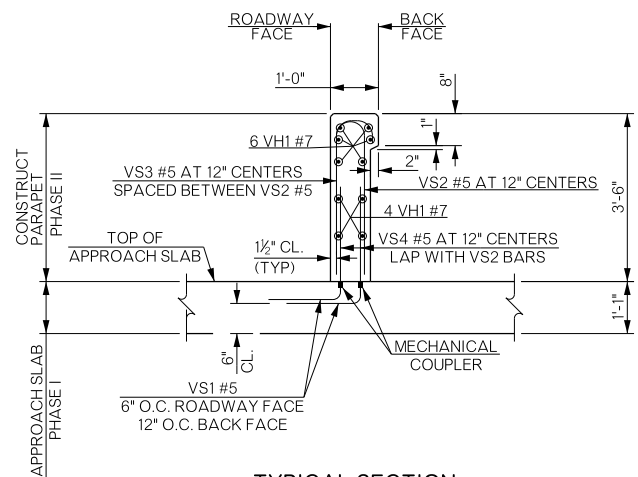


REVISIONS		
REV. NO.	DESCRIPTION	DATE



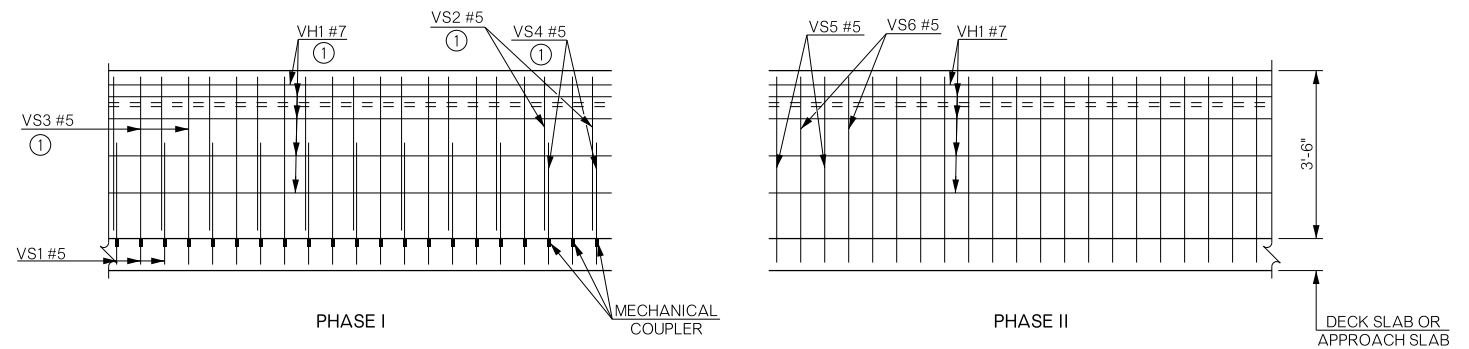
TYPICAL SECTION THRU 42" PARAPET ON DECK SLAB COMPLETED

(FOR PHASING DETAILS, SEE SHEET B053)



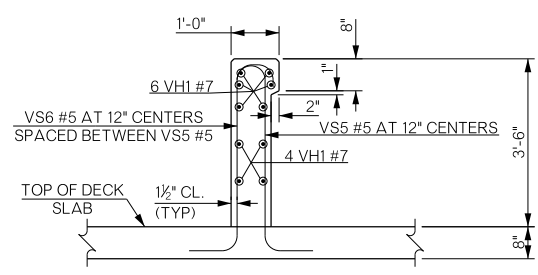
TYPICAL SECTION THRU 42" PARAPET ON APPROACH SLAB COMPLETED

(FOR PHASING DETAILS, SEE SHEET B053)



TYPICAL 42" PARAPET REINFORCING

① REINFORCING IS ON PHASE I SIDE OF BRIDGE, BUT PLACED FOLLOWING PHASE II CONSTRUCTION.



TYPICAL SECTION THRU 42" PARAPET PHASE II

NOTE: 1/4" PERFORMED EXPANSION JOINT FILLER TO BE PLACED IN VERTICAL CONSTRUCTION JOINT.

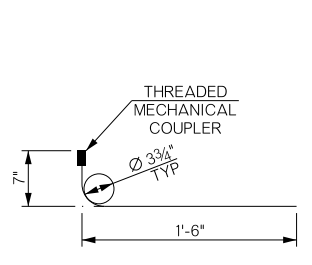
DOUBLE 3/4" CHAMBERS (3/4" DEEP SAWCUT OPTIONAL)

CONSTRUCTION JOINT

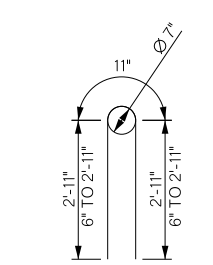
NOTE: TYPICAL AT FIXED PIER OR FIXED ABUTMENT

CONTROL CRACK JOINT

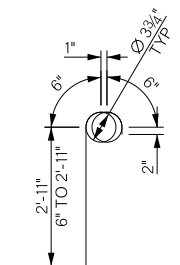
NOTE: ALL LONGITUDINAL REINFORCING SHALL BE CONTINUOUS THRU CONTROL CRACK JOINT



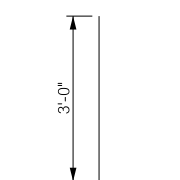
VS1 #5 X 2'-1"
MECHANICAL COUPLER USED FOR VS1 BAR



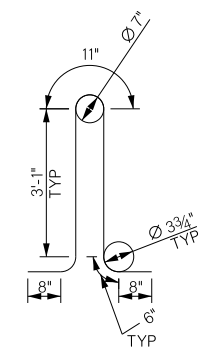
VS2 #5 X 6'-9"
VS7 #5 X 4'-4" AVG.



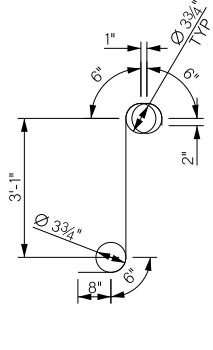
VS3 #5 X 4'-2"
VS8 #5 X 2'-11 1/2" AVG.



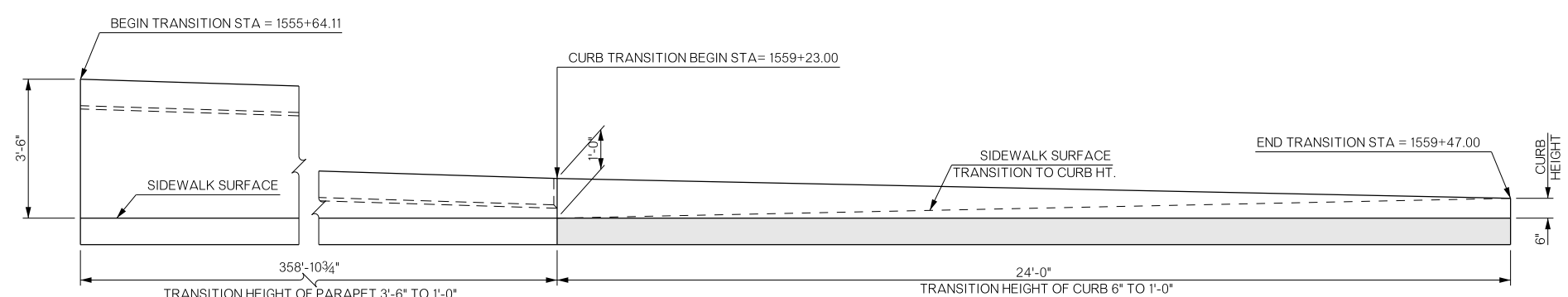
VS4 #5 X 3'-0"
ONE END THREADED



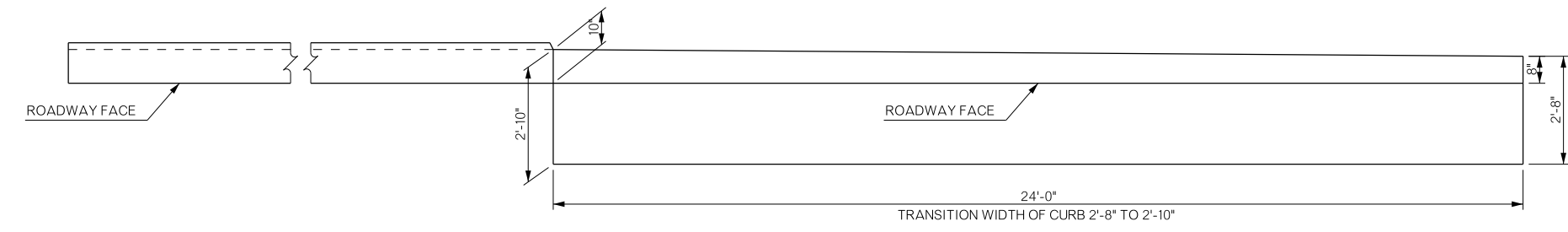
VS5 #5 X 9'-5"



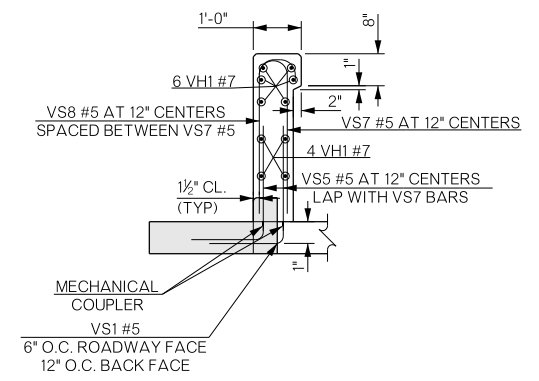
VS6 #5 X 5'-6"



6" CURB TO 42" PARAPET TRANSITION - ELEVATION



6" CURB TO 42" PARAPET TRANSITION - PLAN



TYPICAL SECTION THRU 42" PARAPET TO 6" CURB TRANSITION

BRIDGE "A" SH-33 OVER COTTONWOOD CREEK	LOGAN COUNTY	Design	GT	11/15
DETAILS OF 42" PARAPET (SHEET 2 OF 2)		Detail	TIS	2/16
		Check	TT	7/16
STATE OF OKLAHOMA		DEPARTMENT OF TRANSPORTATION		Sheet: PEARSON Engr: HERNANDEZ
JOB/PIECE NO. 21860(04)	SHEET NO. B074			